

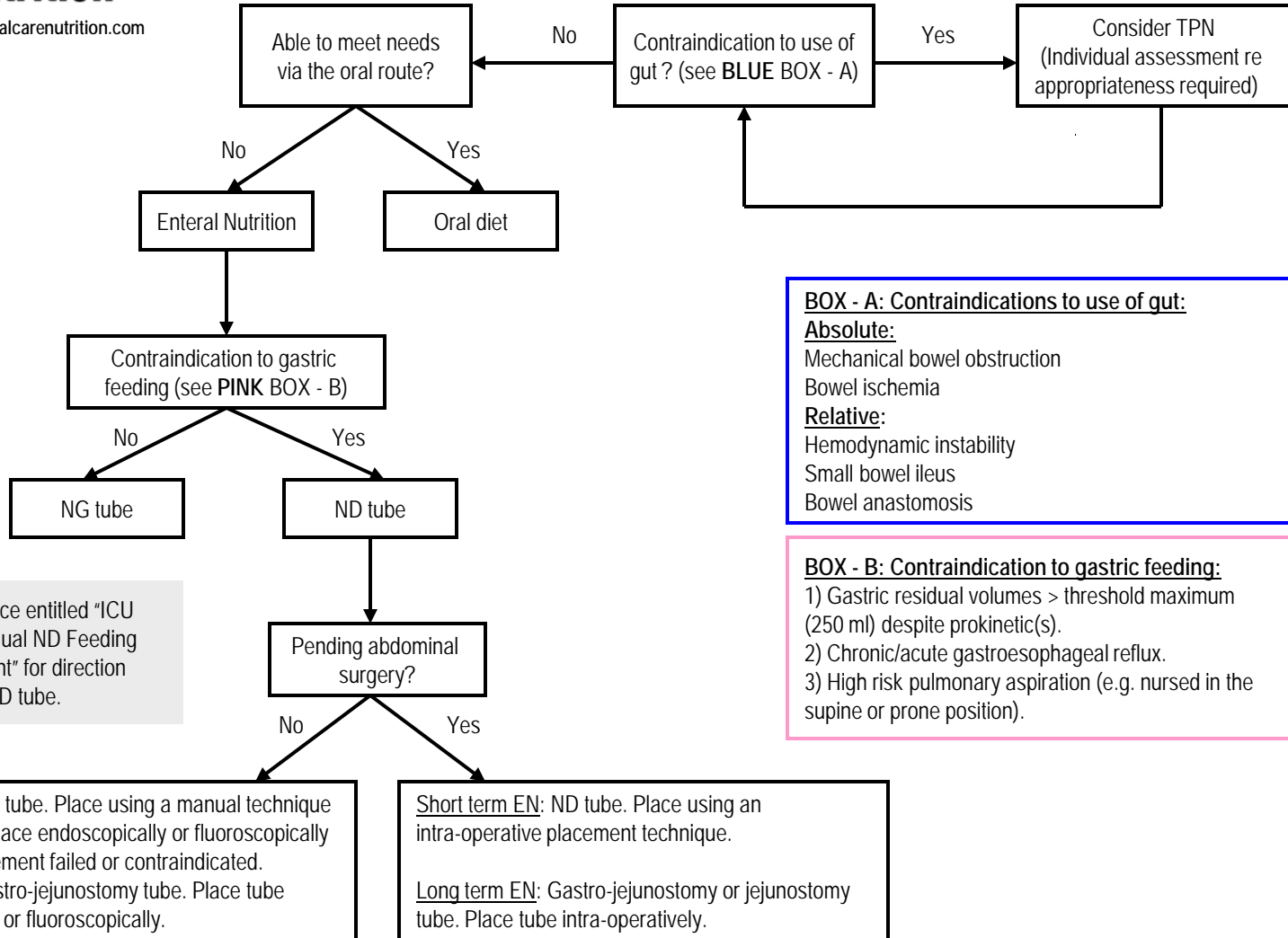


Critical Care Nutrition

www.criticalcarenutrition.com

ICU GUIDELINE: ROUTES OF NUTRITION SUPPORT

START



BOX - A: Contraindications to use of gut:
Absolute:
 Mechanical bowel obstruction
 Bowel ischemia
Relative:
 Hemodynamic instability
 Small bowel ileus
 Bowel anastomosis

BOX - B: Contraindication to gastric feeding:
 1) Gastric residual volumes > threshold maximum (250 ml) despite prokinetic(s).
 2) Chronic/acute gastroesophageal reflux.
 3) High risk pulmonary aspiration (e.g. nursed in the supine or prone position).

Refer to resource entitled "ICU Guideline: Manual ND Feeding Tube Placement" for direction how to place ND tube.

Short term: ND tube. Place using a manual technique (see above). Place endoscopically or fluoroscopically if manual placement failed or contraindicated.
Long term: Gastro-jejunostomy tube. Place tube endoscopically or fluoroscopically.

Short term EN: ND tube. Place using an intra-operative placement technique.
Long term EN: Gastro-jejunostomy or jejunostomy tube. Place tube intra-operatively.