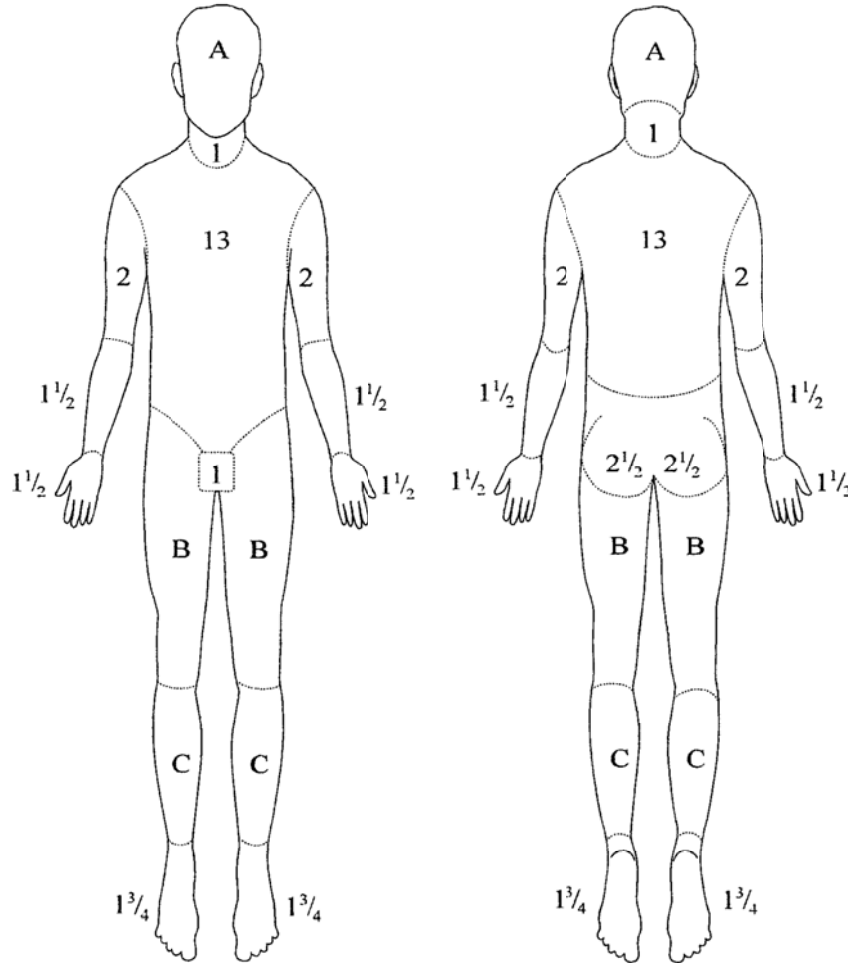


Therapeutic Guidelines

Lund and Browder chart for calculating the percentage of total body surface area burnt (Fig 14.19)



Region	Partial thickness (%) [NB1]	Full thickness (%)
head		
neck		
anterior trunk		
posterior trunk		
right arm		
left arm		
buttocks		
genitalia		
right leg		
left leg		
Total burn		

NB1: Do not include erythema

Area	Age 0	1	5	10	15	Adult
A = half of head	9½	8½	6½	5½	4½	3½
B = half of one thigh	2¾	3¼	4	4½	4½	4¾
C = half of one lower leg	2½	2½	2¾	3	3¼	3½

Therapeutic Guidelines Limited is an independent not-for-profit organisation dedicated to deriving guidelines for therapy from the latest world literature, interpreted and distilled by Australia's most eminent and respected experts.

Published in eTG complete, March 2008. ©Therapeutic Guidelines Ltd. www.tg.org.au