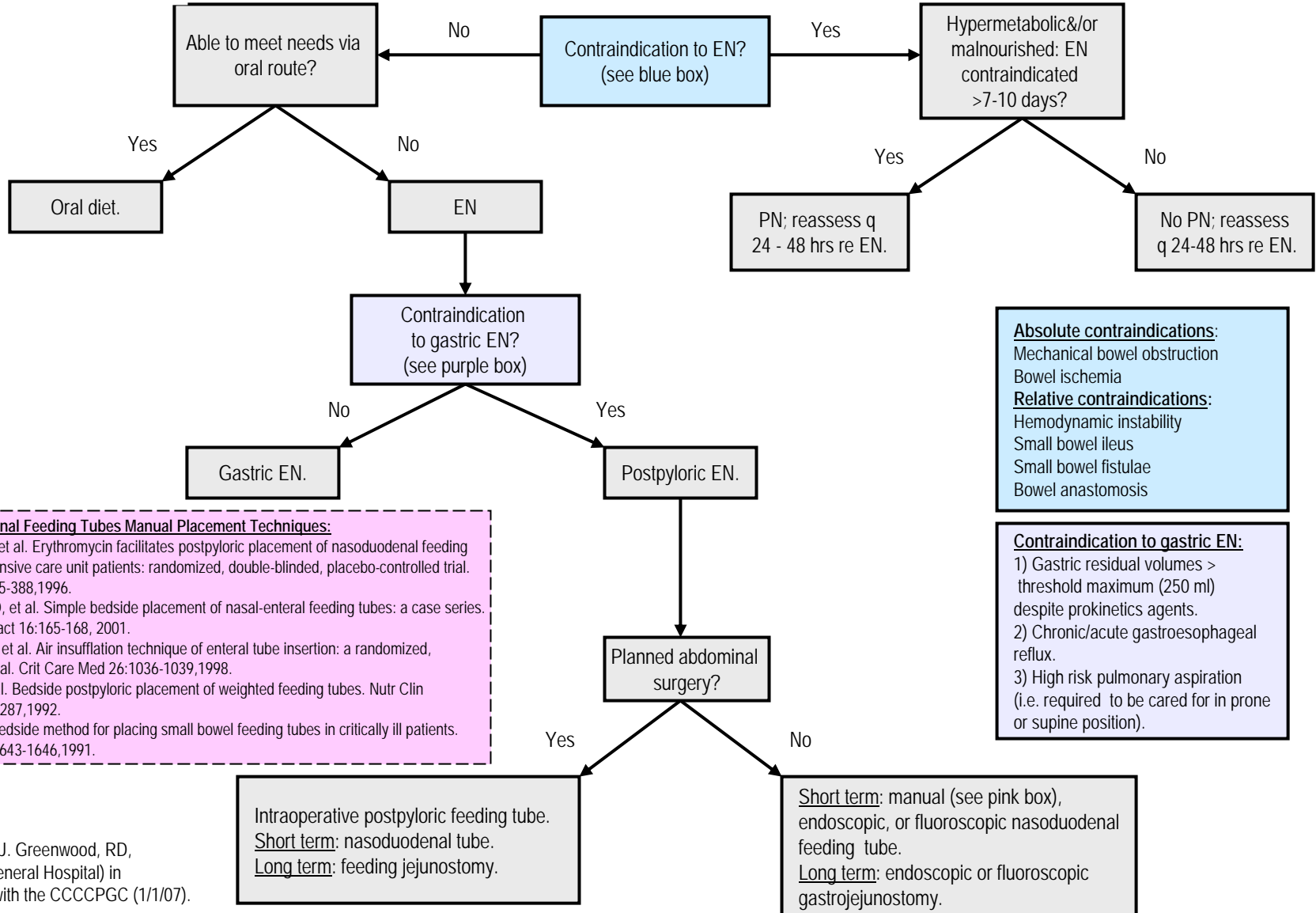




# ROUTES OF NUTRITION SUPPORT GUIDELINE



**Nasoduodenal Feeding Tubes Manual Placement Techniques:**  
 Kalliafas S, et al. Erythromycin facilitates postpyloric placement of nasoduodenal feeding tubes in intensive care unit patients: randomized, double-blinded, placebo-controlled trial. JPEN 20:385-388,1996.  
 Nicholas CD, et al. Simple bedside placement of nasal-enteral feeding tubes: a case series. Nutr Clin Pract 16:165-168, 2001.  
 Salasidis R, et al. Air insufflation technique of enteral tube insertion: a randomized, controlled trial. Crit Care Med 26:1036-1039,1998.  
 Ugo PJ, et al. Bedside postpyloric placement of weighted feeding tubes. Nutr Clin Pract 7:284-287,1992.  
 Zaloga G. Bedside method for placing small bowel feeding tubes in critically ill patients. Chest 100:1643-1646,1991.

**Absolute contraindications:**  
 Mechanical bowel obstruction  
 Bowel ischemia  
**Relative contraindications:**  
 Hemodynamic instability  
 Small bowel ileus  
 Small bowel fistulae  
 Bowel anastomosis

**Contraindication to gastric EN:**  
 1) Gastric residual volumes > threshold maximum (250 ml) despite prokinetics agents.  
 2) Chronic/acute gastroesophageal reflux.  
 3) High risk pulmonary aspiration (i.e. required to be cared for in prone or supine position).